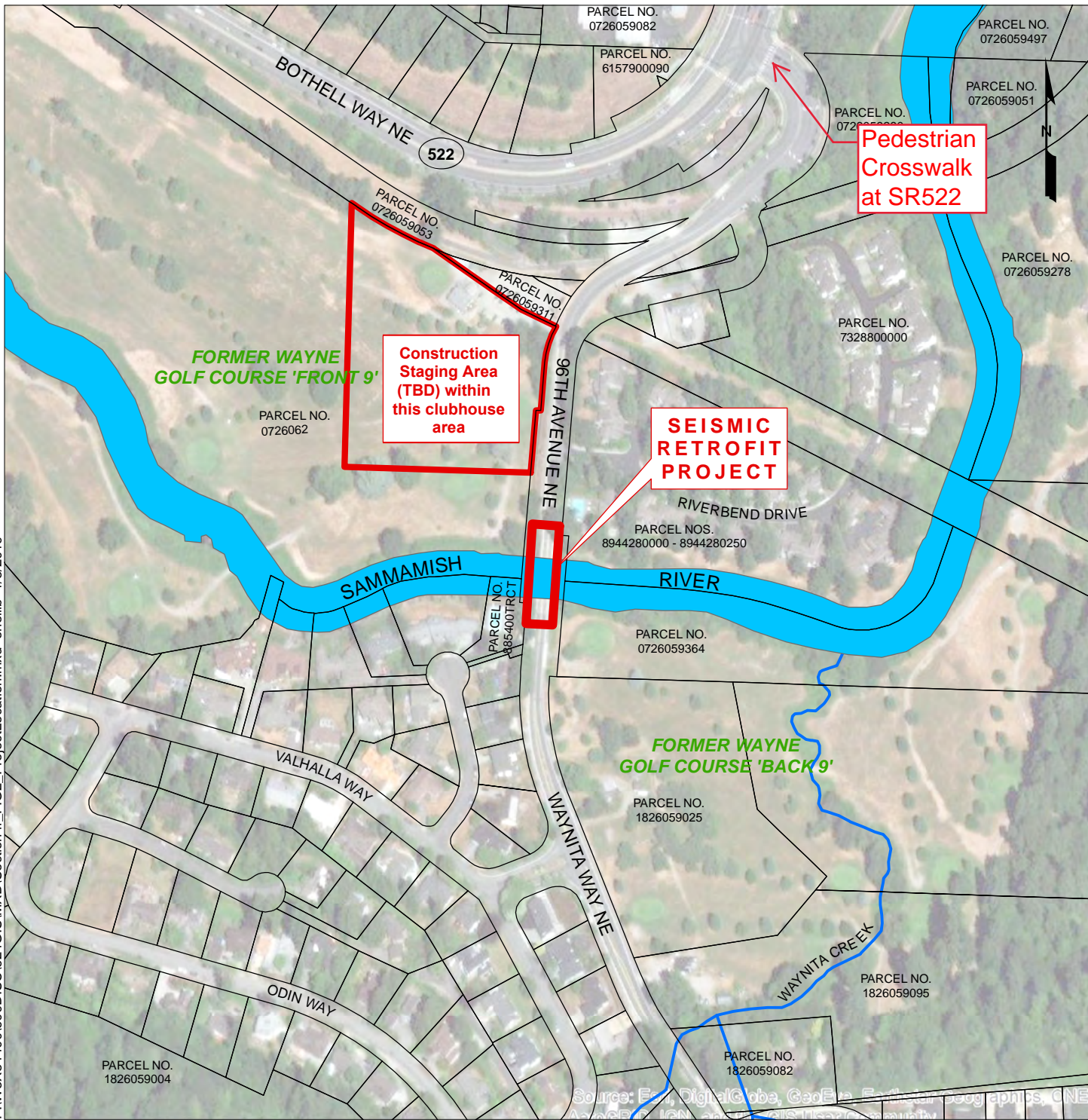
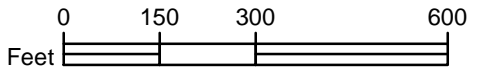


P:\W\3\84400\600\DISC\1624GIS\MXD\Section4f FIG2 ProjectLocation.mxd onellib 1/3/2019



Date: January 2019  
 City of Bothell  
 Project: Sammamish River Bridge Seismic Retrofit  
 Location: 96th Avenue NE/Waynita Way NE  
 Bothell, Washington



## PROJECT LOCATION

Parcel boundaries from King County GIS Center, downloaded December 17, 2018.